

Supplementary Material

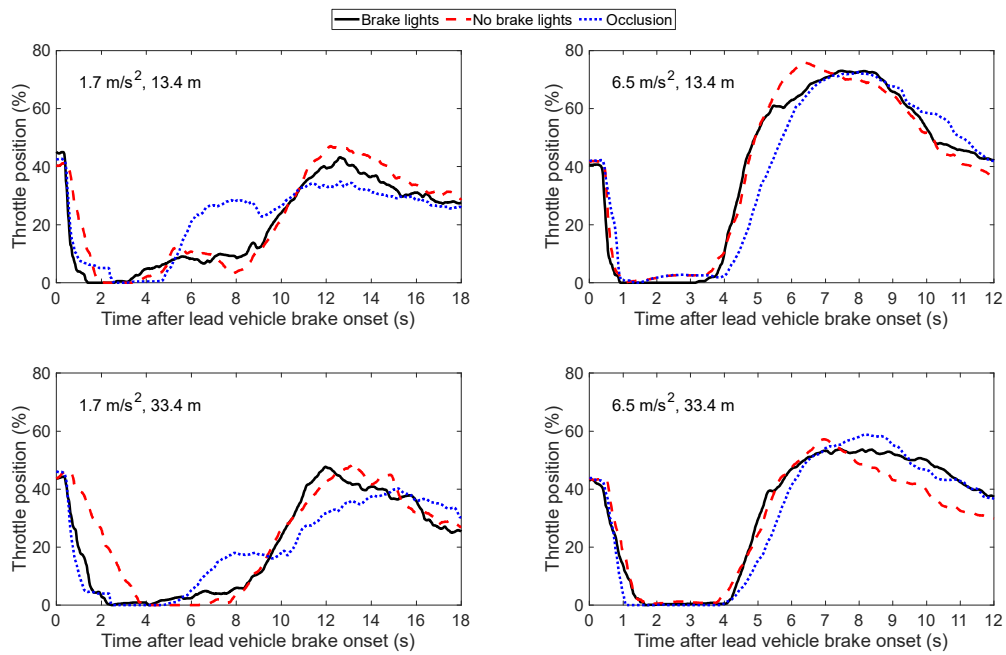


Figure S1. The mean throttle pedal position in the different braking conditions. Note that in the occlusion condition, the simulator screens blanked for 0.4 s (if 6.5 m/s²) or 2.0 s (if 1.7 m/s²).

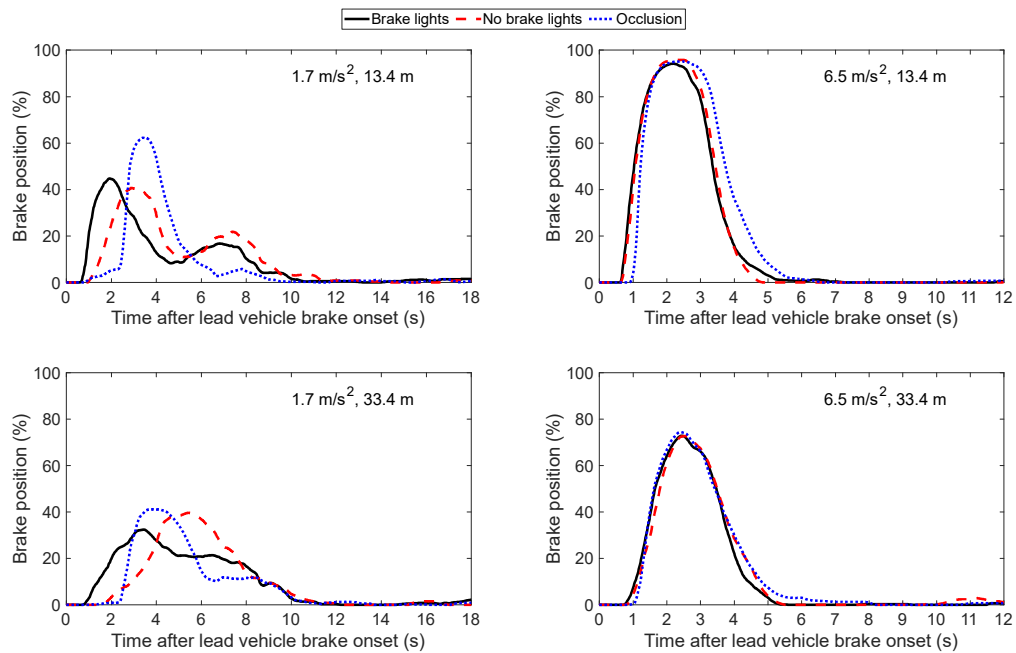


Figure S2. The mean brake pedal position in the different braking conditions. Note that in the occlusion condition, the simulator screens blanked for 0.4 s (if 6.5 m/s²) or 2.0 s (if 1.7 m/s²).

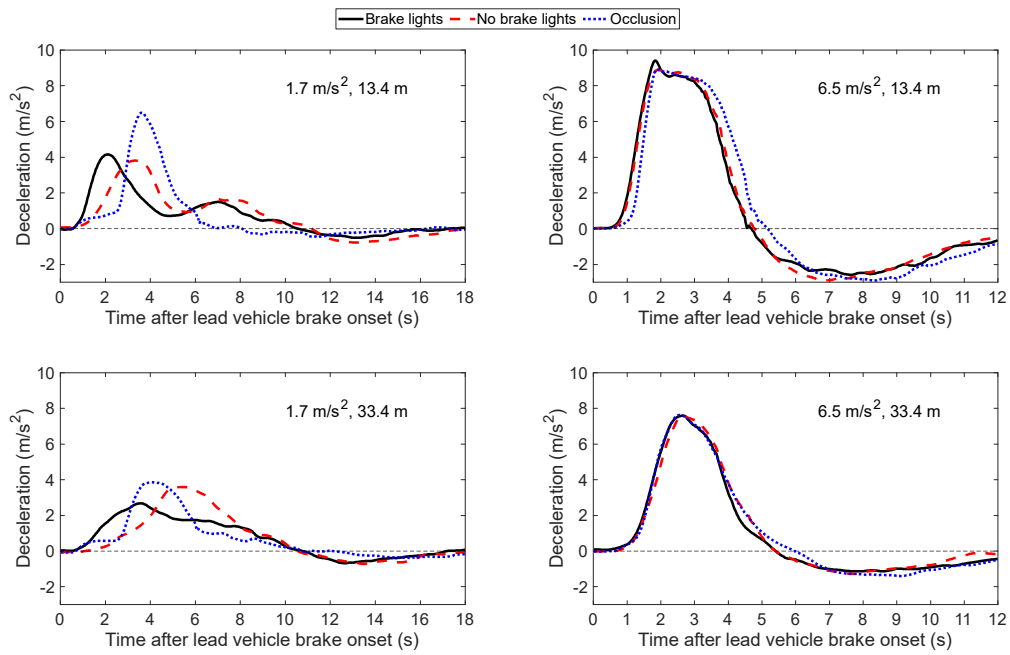


Figure S3. The vehicle deceleration in the different braking conditions. Note that in the occlusion condition, the simulator screens blanked for 0.4 s (if 6.5 m/s²) or 2.0 s (if 1.7 m/s²).

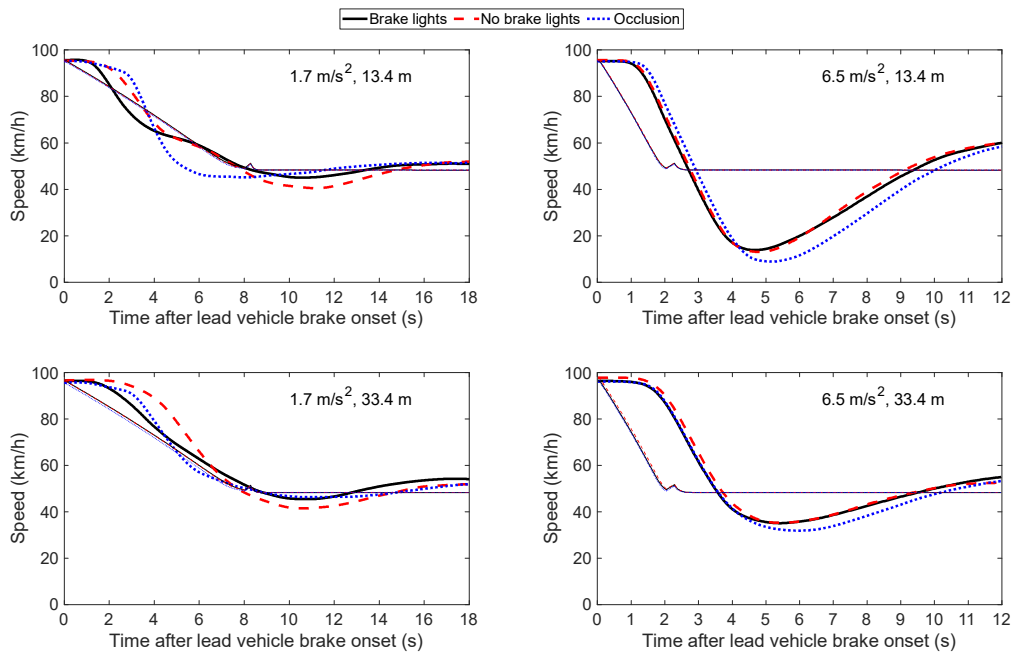


Figure S4. The mean participant's vehicle speed (thicker lines) and the mean lead vehicle speed (thinner lines) in the different braking conditions. Note that in the occlusion condition, the simulator screens blanked for 0.4 s (if 6.5 m/s²) or 2.0 s (if 1.7 m/s²).

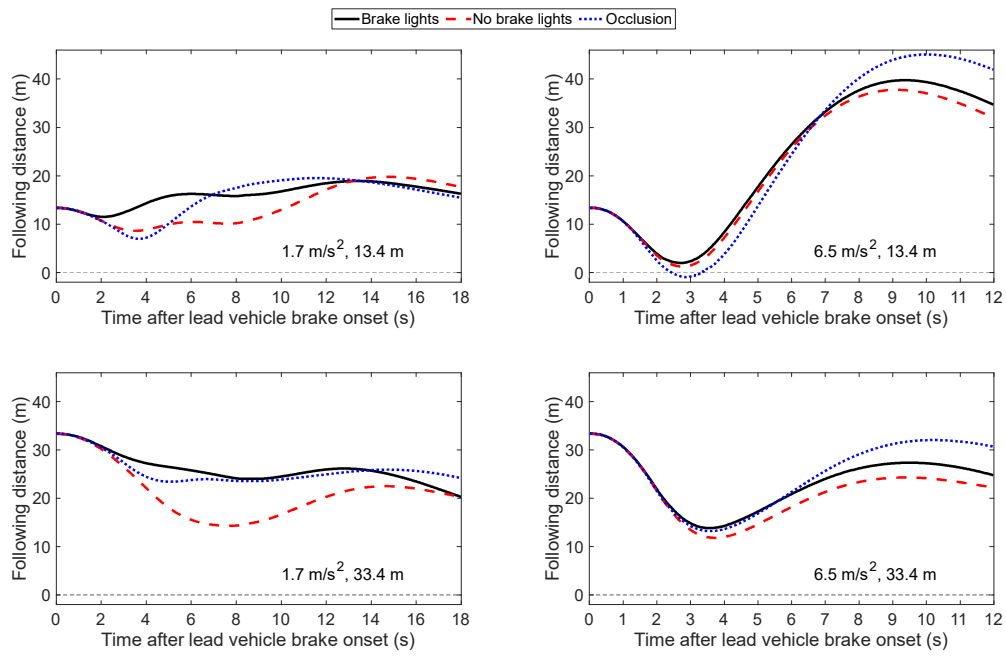


Figure S5. The mean bumper-to-bumper distance in the different braking conditions. Note that in the occlusion condition, the simulator screens blanked for 0.4 s (if 6.5 m/s²) or 2.0 s (if 1.7 m/s²).

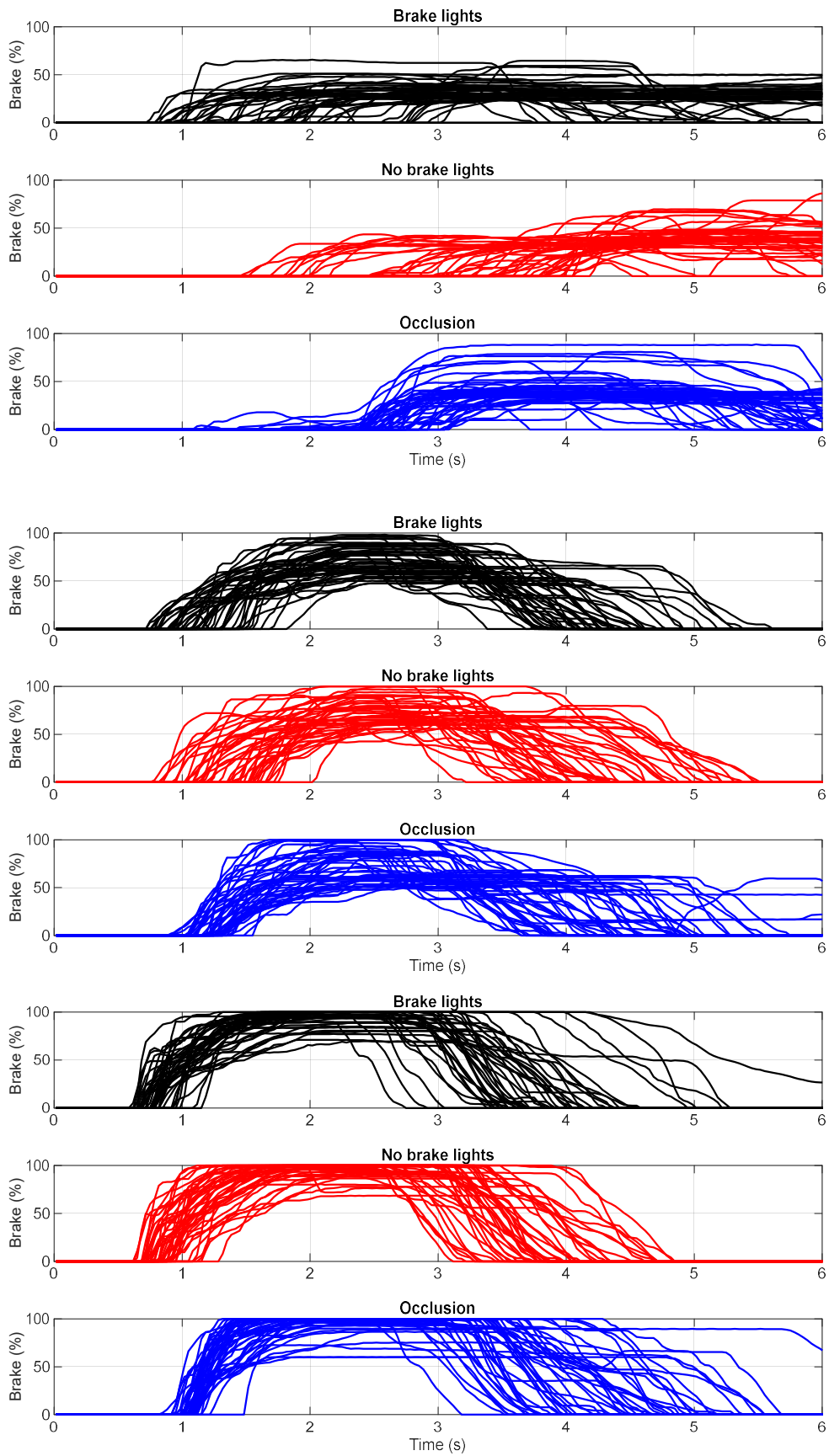


Figure S6. Brake pedal position in the 33.4 m, 1.7 m/s² condition (top), 33.4, 6.5 m/s² condition (middle), and 13.4 m, 6.5 m/s² condition (bottom), for each of the recorded trials.